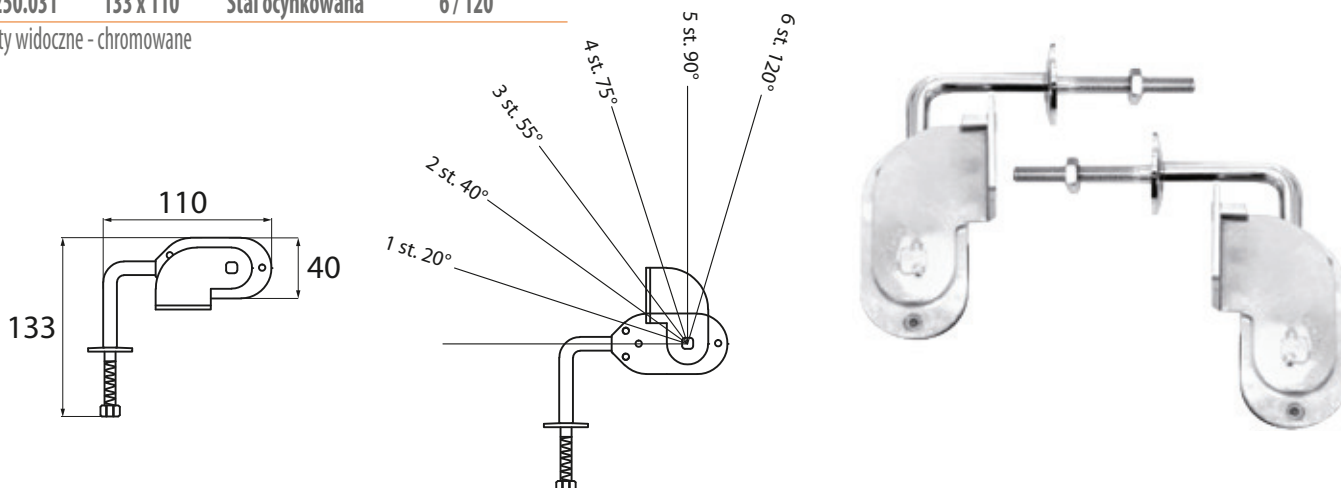


MECHANIZM ZAGŁÓWKA

MECHANIZMY ZAGŁÓWKÓW

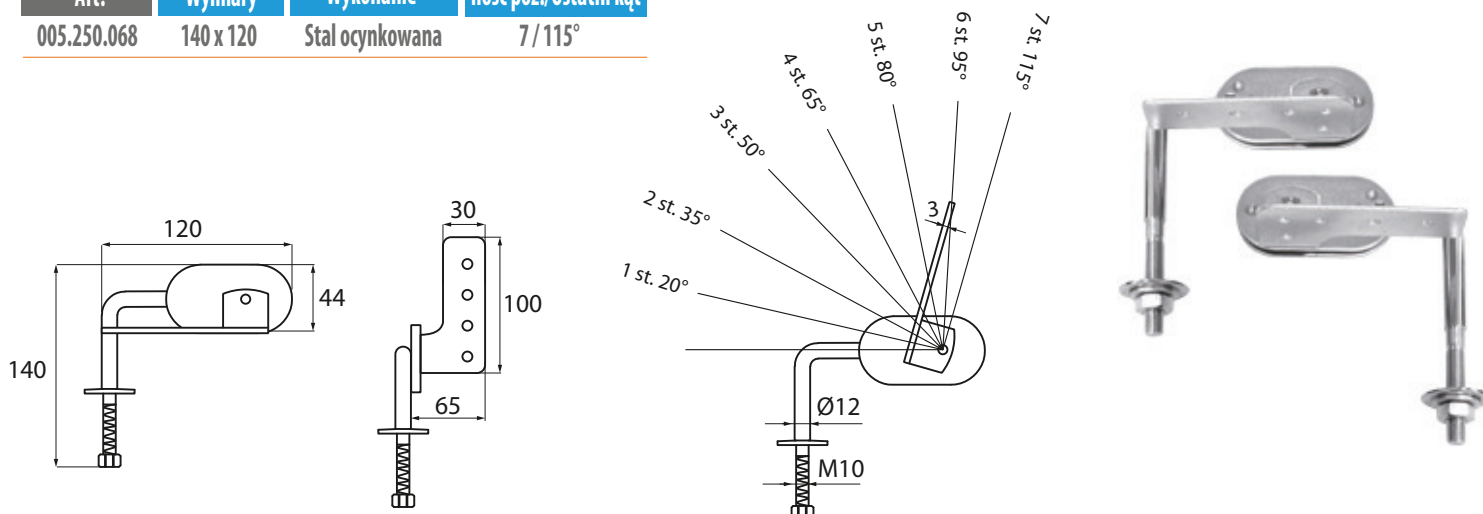
| Art. | Wymiary | Wykonanie | Ilość poz./Ostatni kąt |
|-------------|-----------|-----------------|------------------------|
| 005.250.031 | 133 x 110 | Stal ocynkowana | 6 / 120° |

Elementy widoczne - chromowane



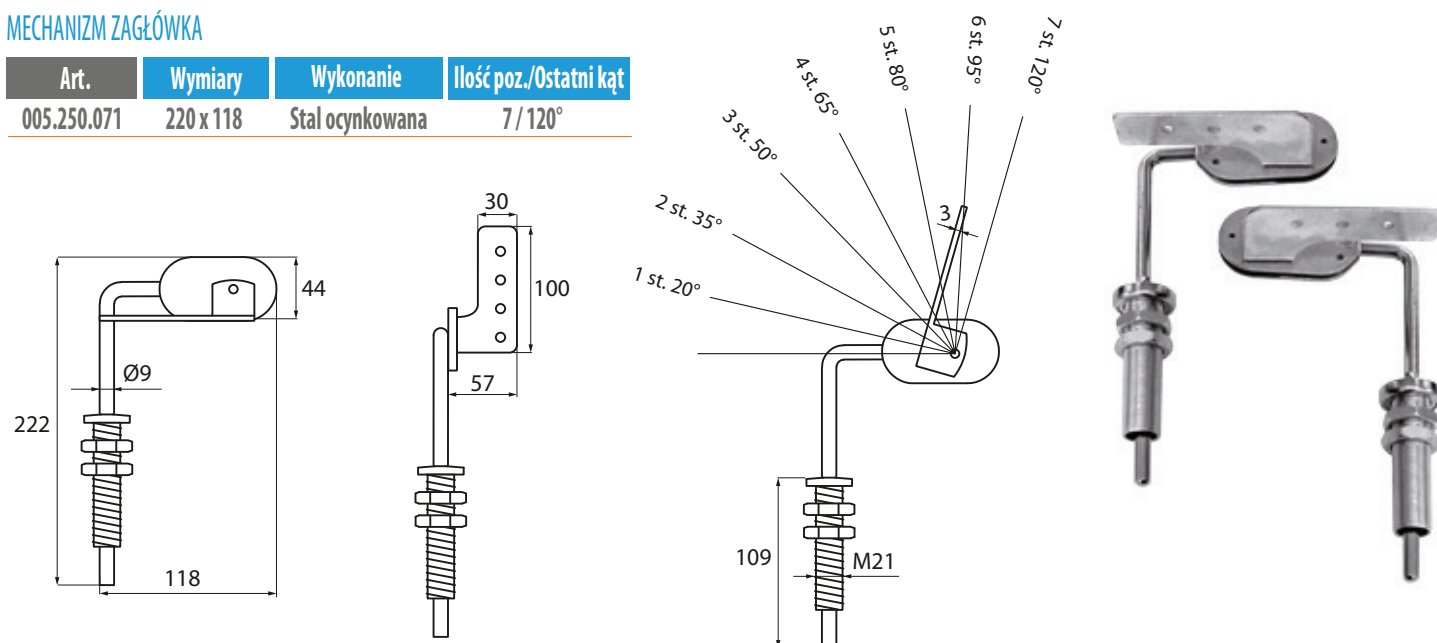
MECHANIZM ZAGŁÓWKA

| Art. | Wymiary | Wykonanie | Ilość poz./Ostatni kąt |
|-------------|-----------|-----------------|------------------------|
| 005.250.068 | 140 x 120 | Stal ocynkowana | 7 / 115° |



MECHANIZM ZAGŁÓWKA

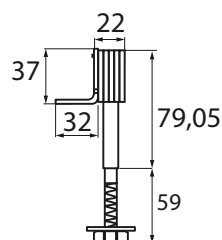
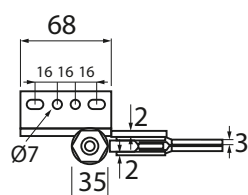
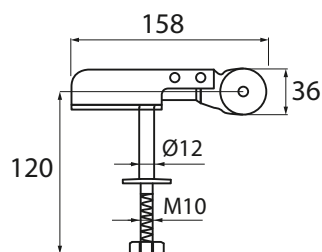
| Art. | Wymiary | Wykonanie | Ilość poz./Ostatni kąt |
|-------------|-----------|-----------------|------------------------|
| 005.250.071 | 220 x 118 | Stal ocynkowana | 7 / 120° |



MECHANIZM ZAGŁÓWKA

| Art. | Wymiary | Wykonanie | Ostatni kąt |
|-------------|-----------|-----------------|-------------|
| 005.250.002 | 120 x 158 | Stal ocynkowana | 165° |

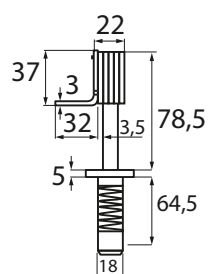
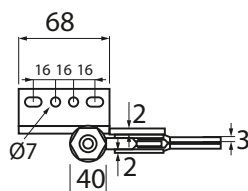
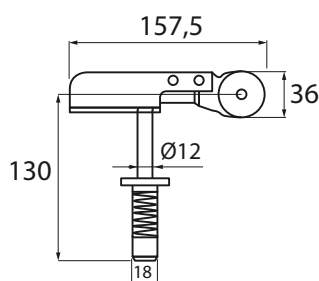
180° na zamówienie



MECHANIZM ZAGŁÓWKA

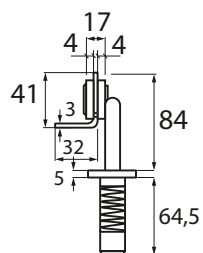
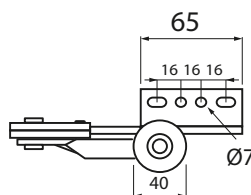
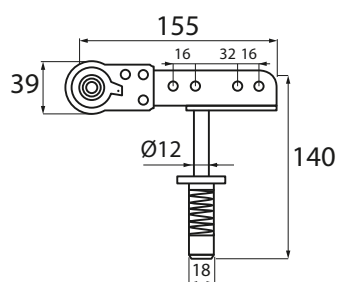
| Art. | Wymiary | Wykonanie | Ostatni kąt |
|-------------|-------------|-----------------|-------------|
| 005.250.003 | 130 x 157,5 | Stal ocynkowana | 165° |

180° na zamówienie



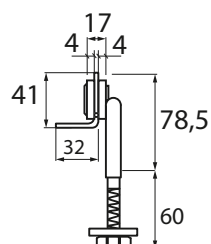
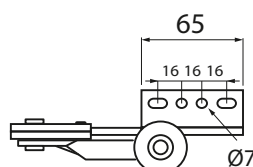
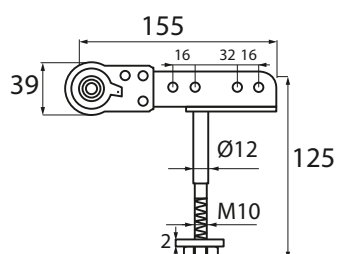
MECHANIZM ZAGŁÓWKA

| Art. | Wymiary | Wykonanie | Ostatni kąt |
|-------------|-----------|-----------------|-------------|
| 005.250.010 | 140 x 155 | Stal ocynkowana | 180° |



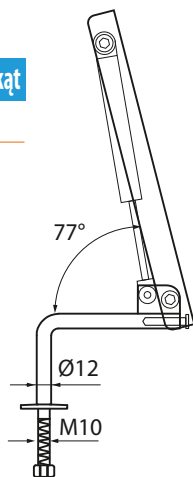
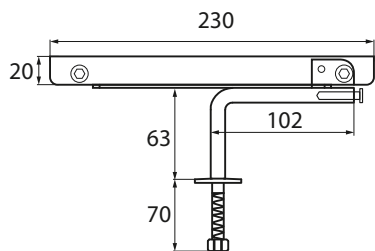
MECHANIZM ZAGŁÓWKA

| Art. | Wymiary | Wykonanie | Ostatni kąt |
|-------------|-----------|-----------------|-------------|
| 005.250.011 | 125 x 155 | Stal ocynkowana | 180° |



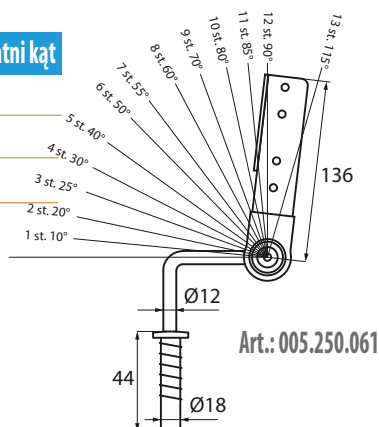
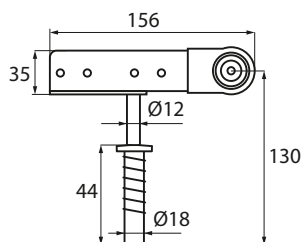
MECHANIZM ZAGŁÓWKA

| Art. | Wymiary | Wykonanie | Ilość poz./Ostatni kąt |
|-------------|-----------|-----------------|------------------------|
| 005.250.066 | 133 x 230 | Stal ocynkowana | 1/77° |

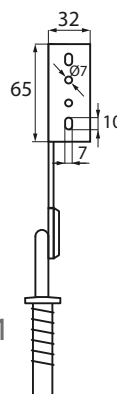


MECHANIZM ZAGŁÓWKA

| Art. | Wymiary | Wykonanie | Ilość poz./Ostatni kąt |
|-------------|-----------|-----------------|------------------------|
| 005.250.060 | 130 x 156 | Stal ocynkowana | 8 |
| 005.250.061 | 130 x 156 | Stal ocynkowana | 13/115° |
| 005.250.062 | 130 x 156 | Stal ocynkowana | 15 |

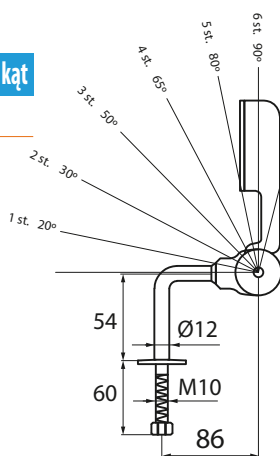
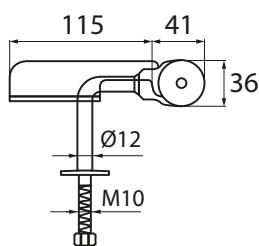


Art.: 005.250.061



MECHANIZM ZAGŁÓWKA

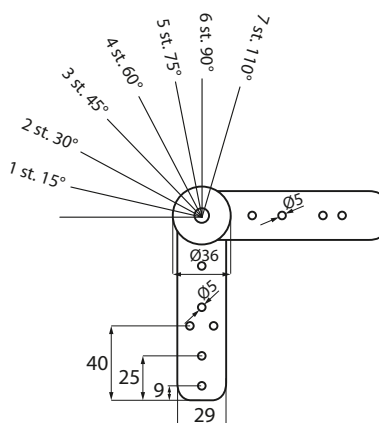
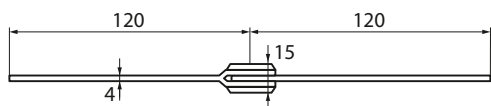
| Art. | Wymiary | Wykonanie | Ilość poz./Ostatni kąt |
|-------------|-----------|-----------------|------------------------|
| 005.250.065 | 114 x 156 | Stal ocynkowana | 7/110° |



MECHANIZMY PODŁOKIETNIKÓW

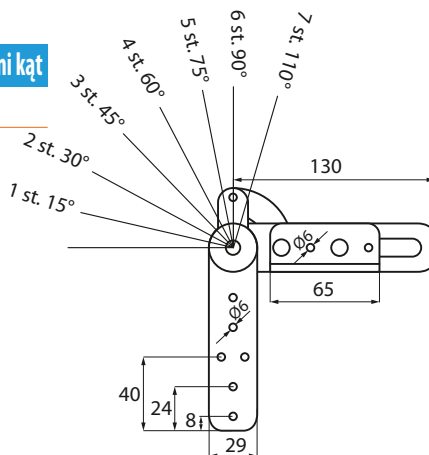
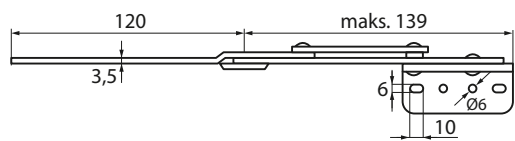
MECHANIZM PODŁOKIETNIKA

| Art. | Wymiary | Wykonanie | Ilość poz./Ostatni kąt |
|-------------|-----------|-----------------|------------------------|
| 005.250.101 | 120 x 120 | Stal ocynkowana | 7/110° |



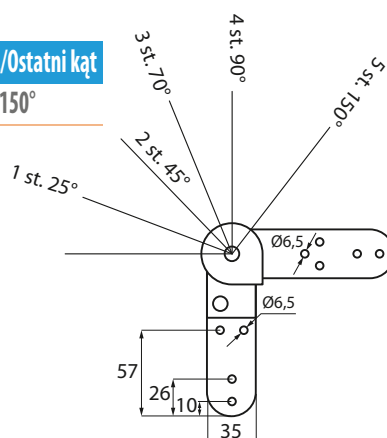
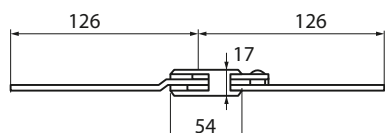
MECHANIZM PODŁOKIETNIKA

| Art. | Wymiary | Wykonanie | Ilość poz./Ostatni kąt |
|-------------|-----------|-----------------|------------------------|
| 005.250.102 | 120 x 130 | Stal ocynkowana | 7 / 110° |



MECHANIZM PODŁOKIETNIKA

| Art. | Wymiary | Wykonanie | Ilość poz./Ostatni kąt |
|-------------|-----------|-----------------------------|------------------------|
| 005.250.103 | 126 x 126 | Tworzywo czarne/Stal ocynk. | 5 / 150° |

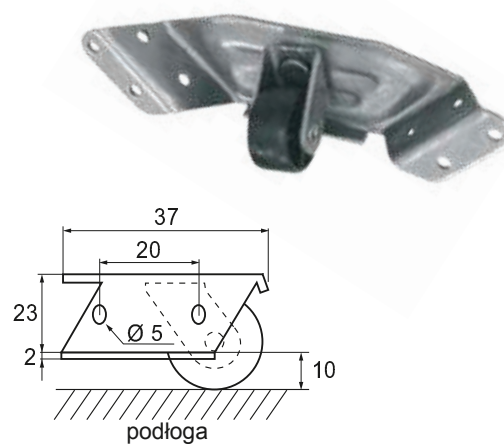
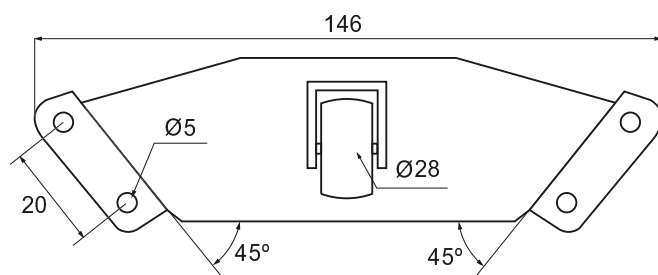


NAROŻNA ROLKA OBROTOWA

ROLKI I KÓŁKA

| Art. | Materiał |
|-------------|---------------------|
| 08.06.100-0 | Stal/Czarny plastik |

Montaż w narożniku cokołu. Wzmacnia element mebla.



ROLKI

| Art. | Kolor | Średnica Ø | Wysokość H | Odległość C.C | Wymiary A/B |
|-------------|--------|------------|------------|---------------|-------------|
| 08.06.010-9 | Biały | 25 mm | 28 mm | 32 mm | 19/42 mm |
| 08.06.020 | Biały | 29 mm | 30 mm | 32 mm | 19/42 mm |
| 08.06.025-1 | Biały | 29 mm | 32 mm | 32 mm | 19/42 mm |
| 08.06.027-0 | Czarny | 25 mm | 28,6 mm | 32 mm | 19/42 mm |
| 08.06.040-0 | Szary | 25 mm | 28 mm | 32 mm | 19/42 mm |
| 08.06.042-0 | Szary | 32 mm | 39 mm | 46 mm | 20/58 mm |
| 08.06.044-0 | Szary | 40 mm | 43 mm | 46 mm | 20/58 mm |

Materiał

Kółko: tworzywo z nakładką z gumy w różnych kolorach
 Obejma: stal ocynkowana
 Udźwig: 25 kg

